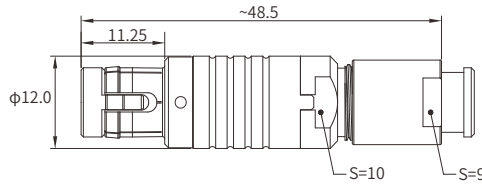


■ PQG Six Petal Plug, Key(G), Cable Collet

- Connector series: PQG
- Contact: Male
- Key: G(More keys, refer to page 43)
- Locking type: Self-locking
- Orientation type: Straight
- Part No.: PQG.1B.3XX.CLACXX(Z)
- Mated with: FQG.1B.3XX.CLLPV



Note: "X" refers to part number definition on page 17

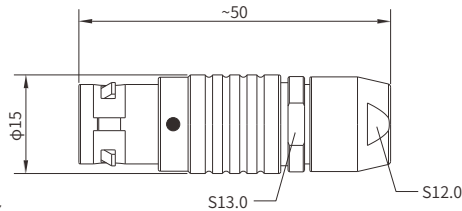
■ General Information

Ambient temperature:	-55°C~+200°C
Endurance:	>5000 cycles
Insulator:	PEEK
Connector contacts:	Brass with gold plated
Coupling nut/screw:	Brass with Cr plated

Housing:	Brass with Cr plated
Insulator resistance:	≥100MΩ
IP rating:	IP 68
Shielding efficiency:	at 10MHz>75dB/at 1GHz>40dB
Salt spray corrosion test:	>144h

■ PSG (Coaxial+Low Voltage), Straight Plug, Key(G), Cable Collet

- Connector series: PSG
- Contact: Male
- Locking type: Self-locking
- Orientation type: Straight
- Part No.: PSG.2B.810.CLADXX
- Mated with: FSG series



Note: "X" refers to part number definition on page 17

■ General Information

Ambient temperature:	-55°C ~ + 250°C
Endurance:	>5000 cycles
Insulator:	PEEK
Connector contacts:	Brass with gold plated

Housing:	Brass with Cr plated
IP rating:	IP50
Shielding efficiency:	at 10MHz>75dB/at 1GHz>40dB
Salt spray corrosion test:	>144h

Impedance(Ω)	Coaxial					Low voltage			
	φB(mm) Min.	φB(mm) Max.	Cable OD(mm) Max.	VSWR (f=GHz)	Cable standard	φA(mm)	Contact type	Rated voltage (KV)	Rated current (A)
50	0.50	0.58	1.65	1.04+0.1f	RG178 B/U	0.70	Solder	0.3	7